

# **ARKSCAN**

## **58mm Series**

### **Printer**

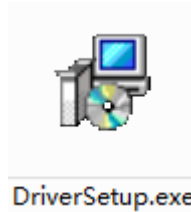
## **Driver**

## **Setup**

## **Manual**

---

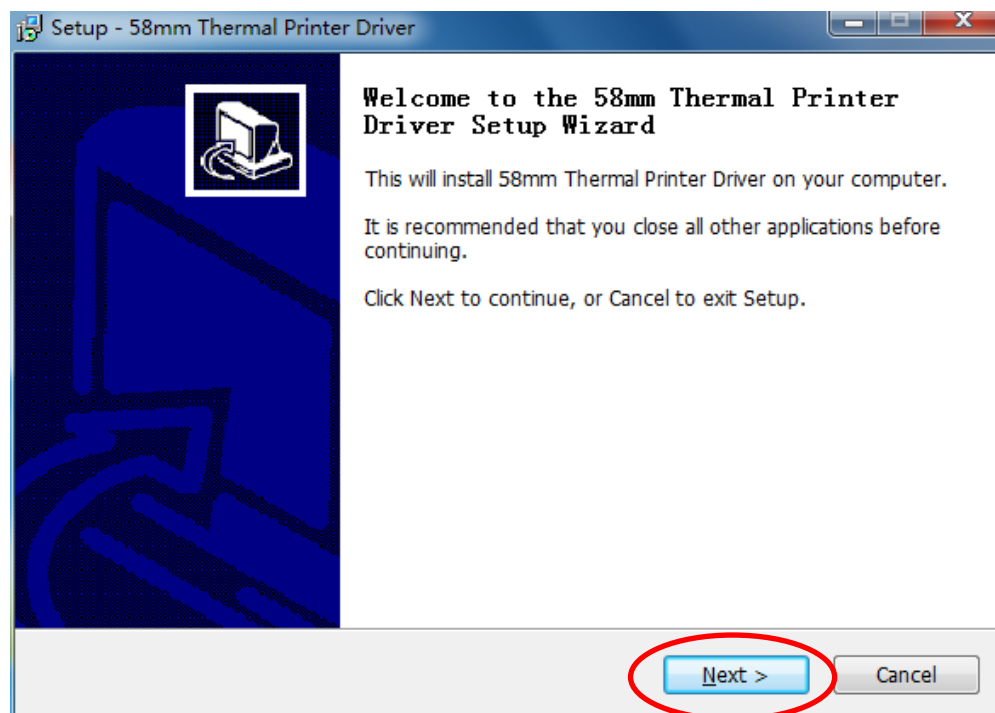
## 1. Windows Driver Installation



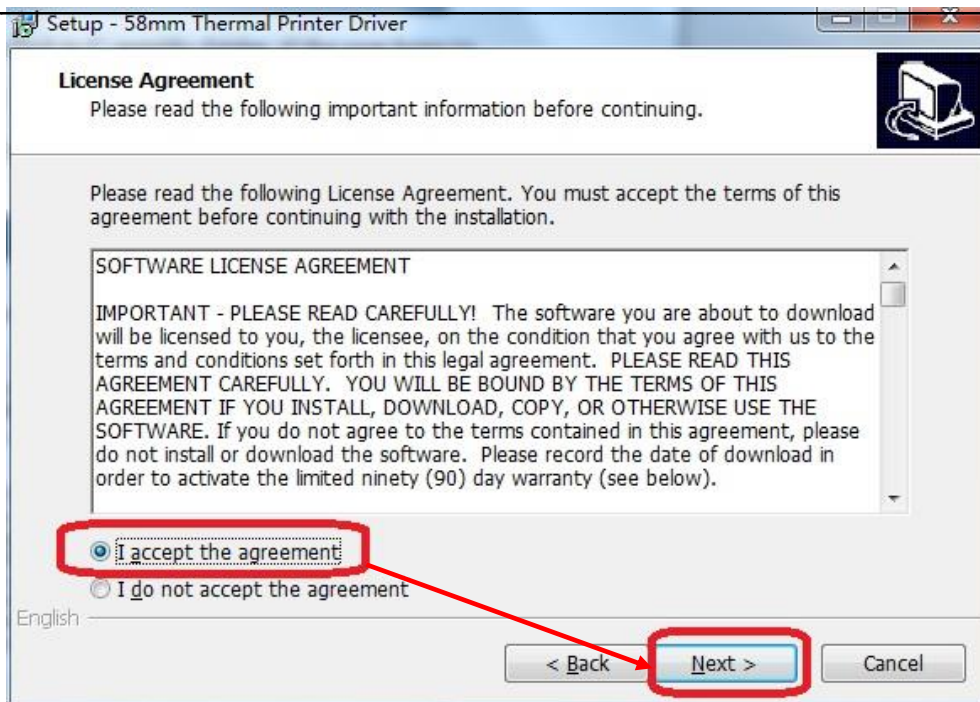
Double click the icon as above.

Following is the welcome screen:

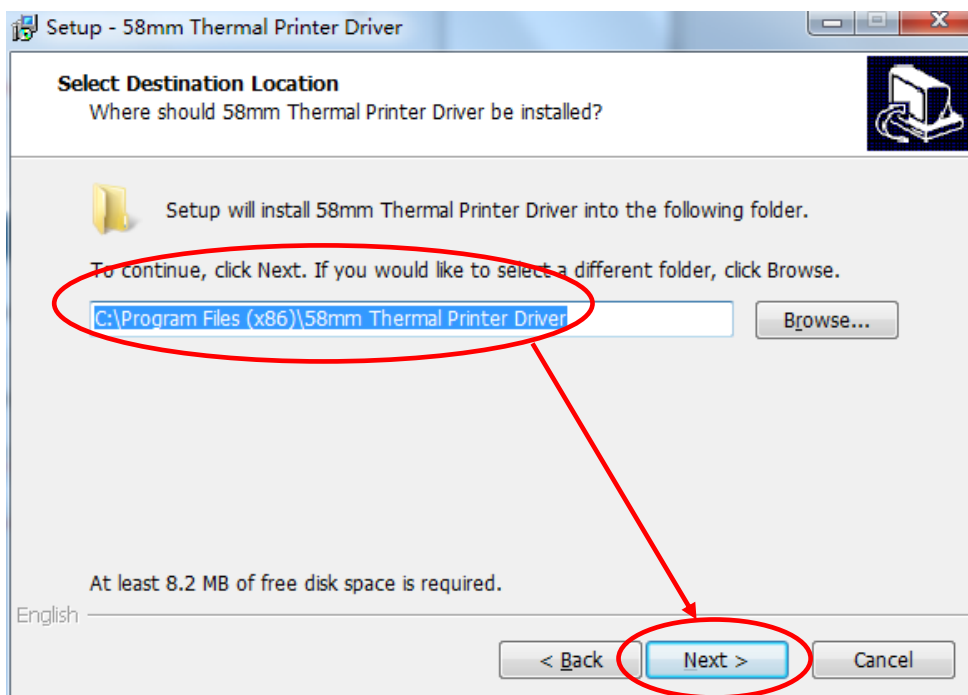
Click “next” (see the following picture)



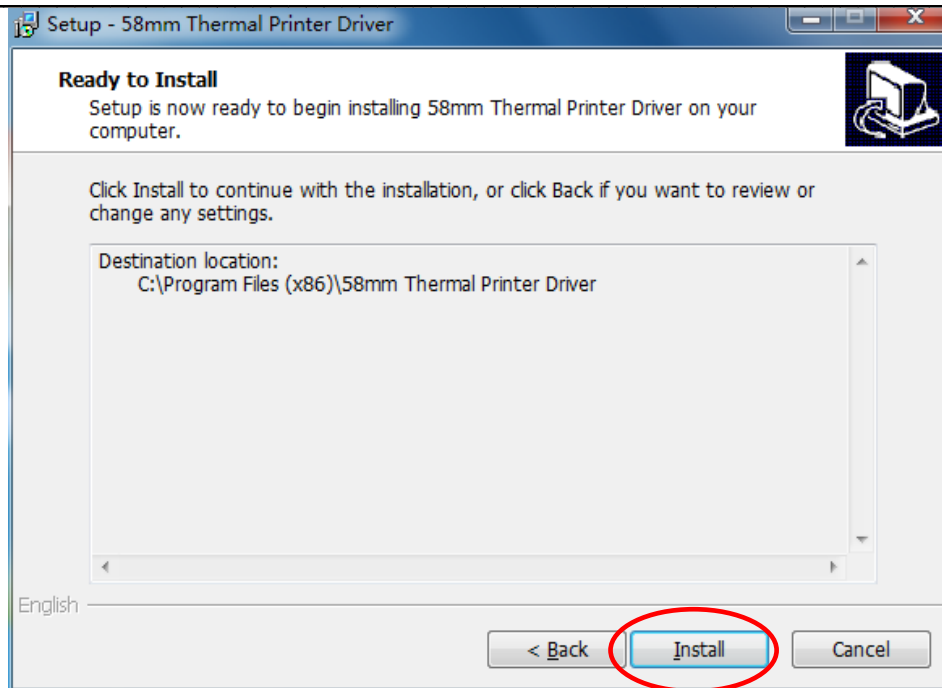
Please read the license agreement carefully and then choose “I accept the agreement”. (See the following picture)



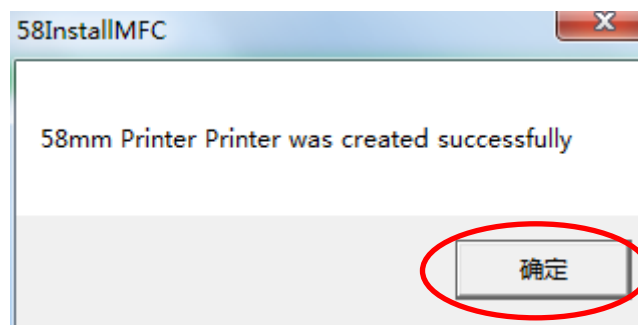
The driver default(recommended) installed in C specific folder, if the user hope to change the installation path, please click “ Browse...” and choose the destination folder, then click “Next”. (See the following picture)



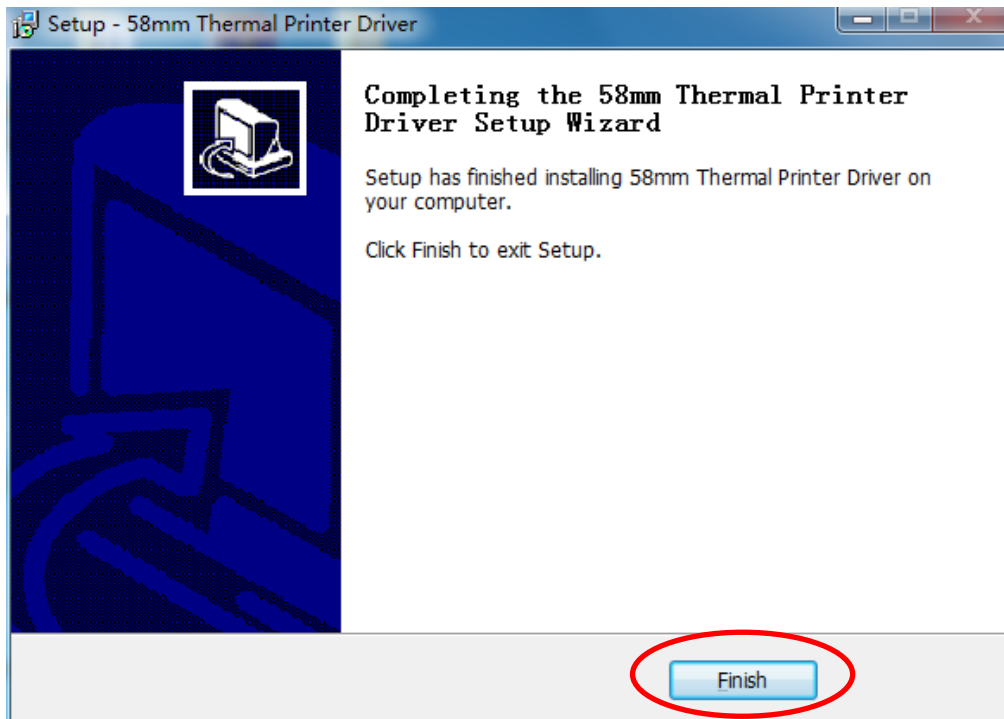
Click “Install.” (See the following picture).



After it, please wait for minutes, when the pending installation is completed that would appears the above information, which means the setting is successful, then click “ok”. (See the following picture)



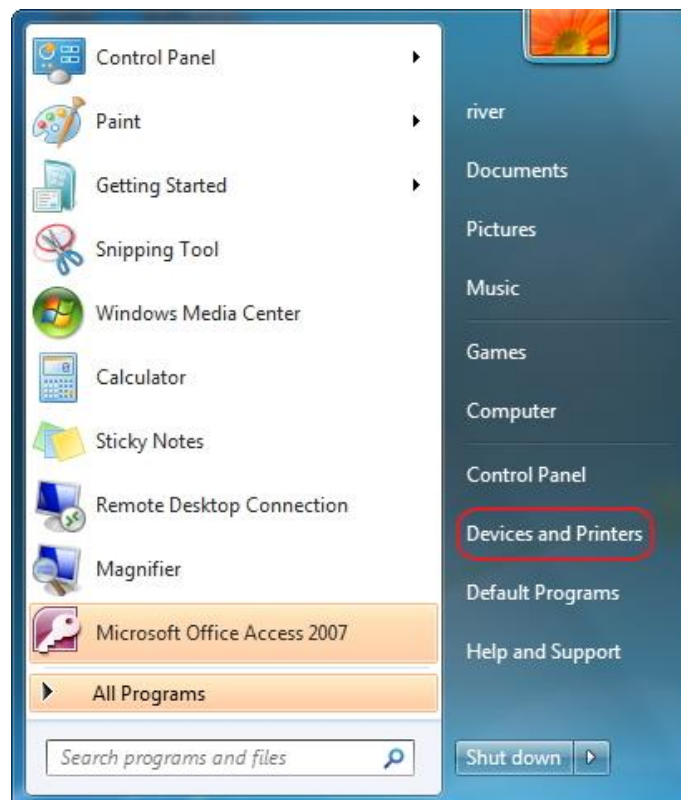
After it, please wait for minutes, when the pending installation is completed that would appears the above information, which means the setting is successful, then click “ok”. (see the following picture)



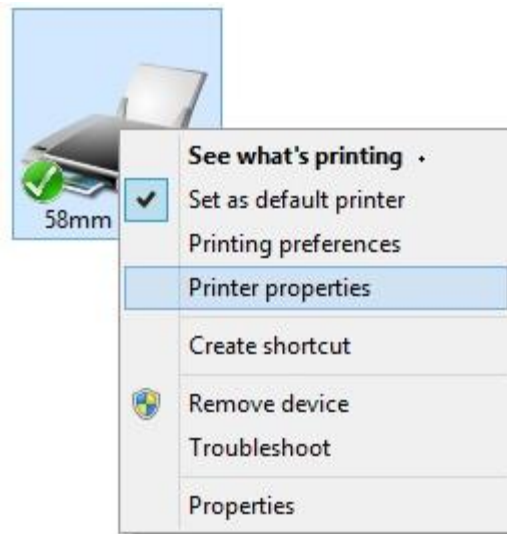
Click “Finish” to exist the setup.

## 2. Setup and test the printer

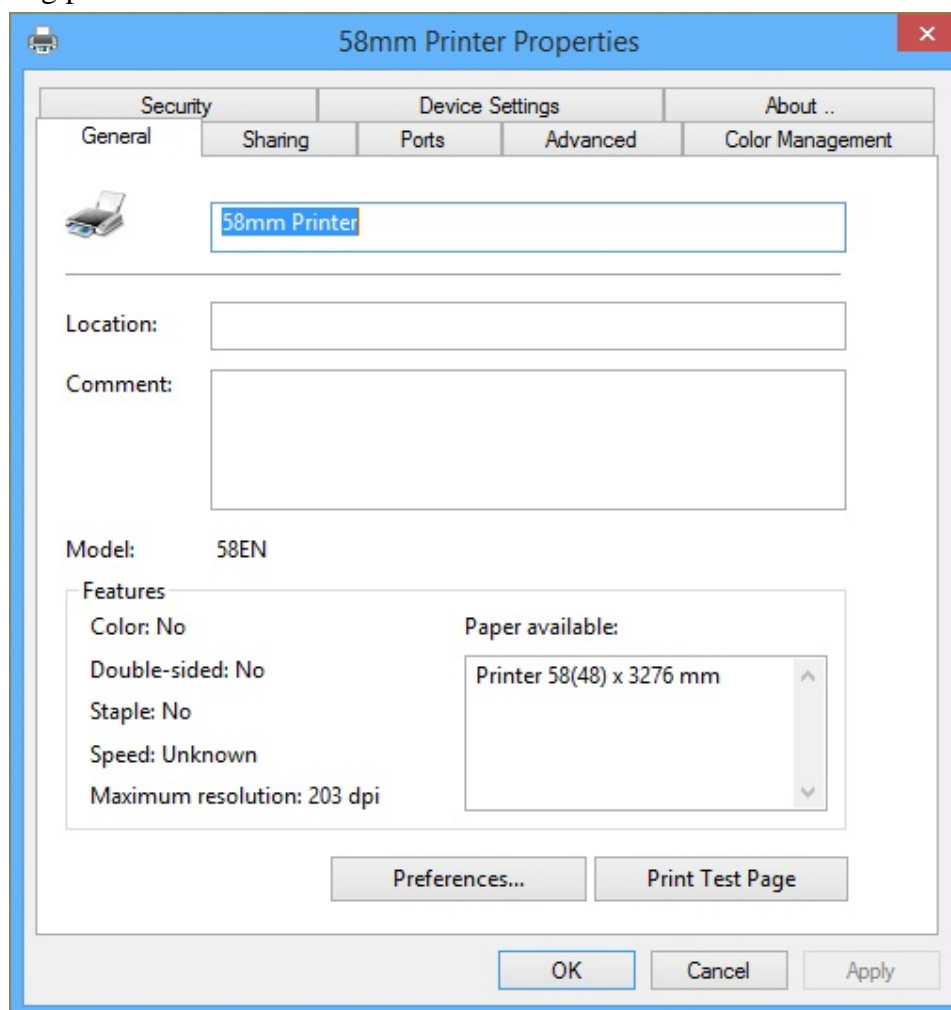
### 2.1 Setting printer property



Click “Start” menu, then find and click “Devices and Printers” as above. (See the following picture).



Right click “58mm Printer” and choose “Printer Properties” that would appear following picture:



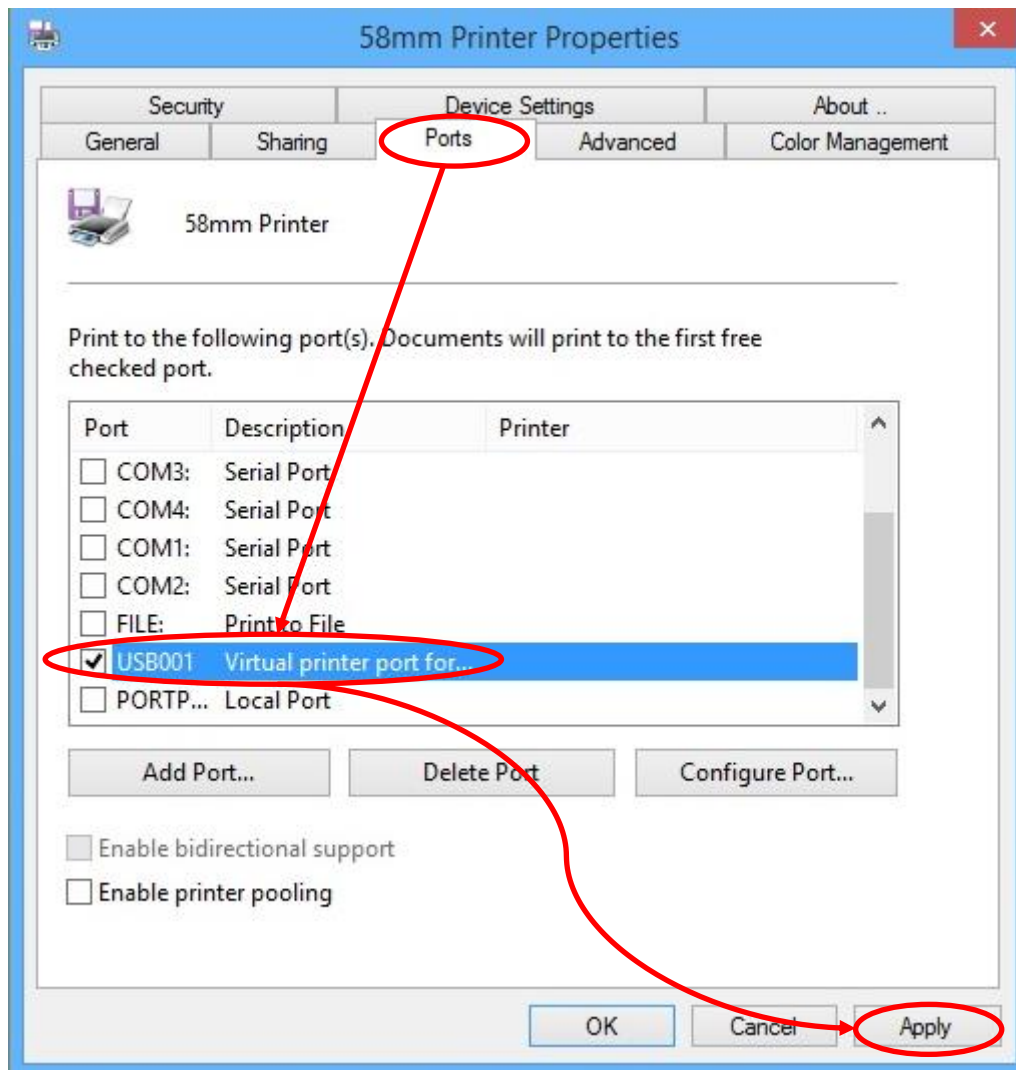
---

In 58mm Printer Properties, please find “General” option, the user could configure the communication interface of printer, such as serial, parallel, USB, and also could set the paper size etc. When the setting is finished, the user could print the test page.

The AS58U printer you have is an USB interface, so the 58mm printer needs to map to one of the USB ports, not the COM port, neither LPT port, please follow the next section to continue the configuration.

## 2.2 USB Port Configuration

In "58mm Printer Properties", please go to "Ports" tab to setup the USB communication interface between printer and computer. Such as the following diagram:

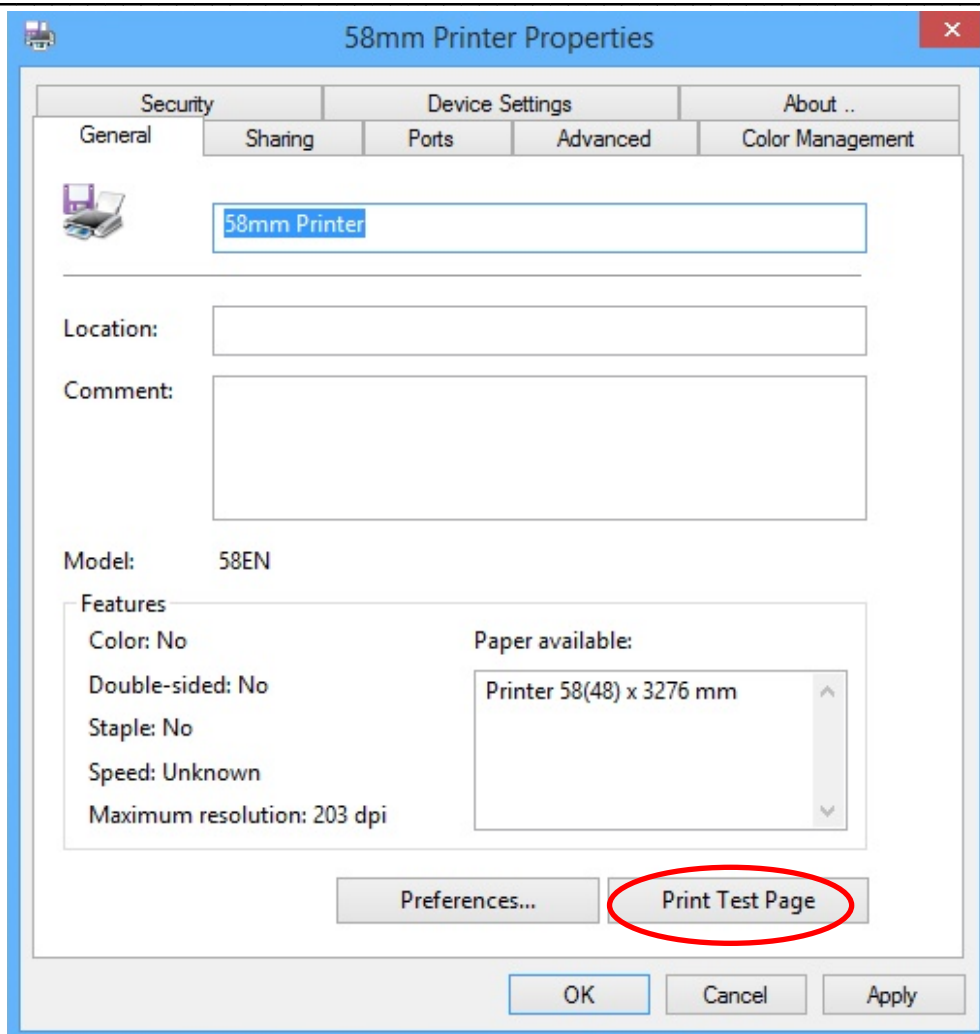


Choose the available USB port, such as the one shown in above and then click “Apply” to complete the configuration of USB port.

## 2.3 Print test page

When the configuration of communication port is finished, the user could print the test page.

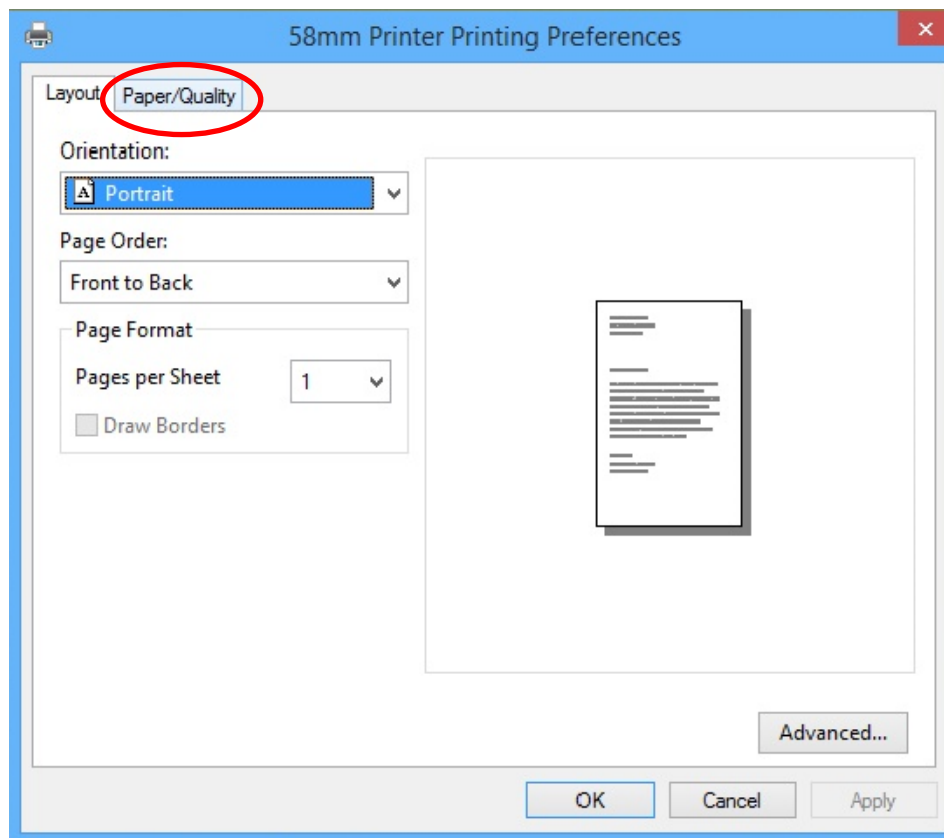
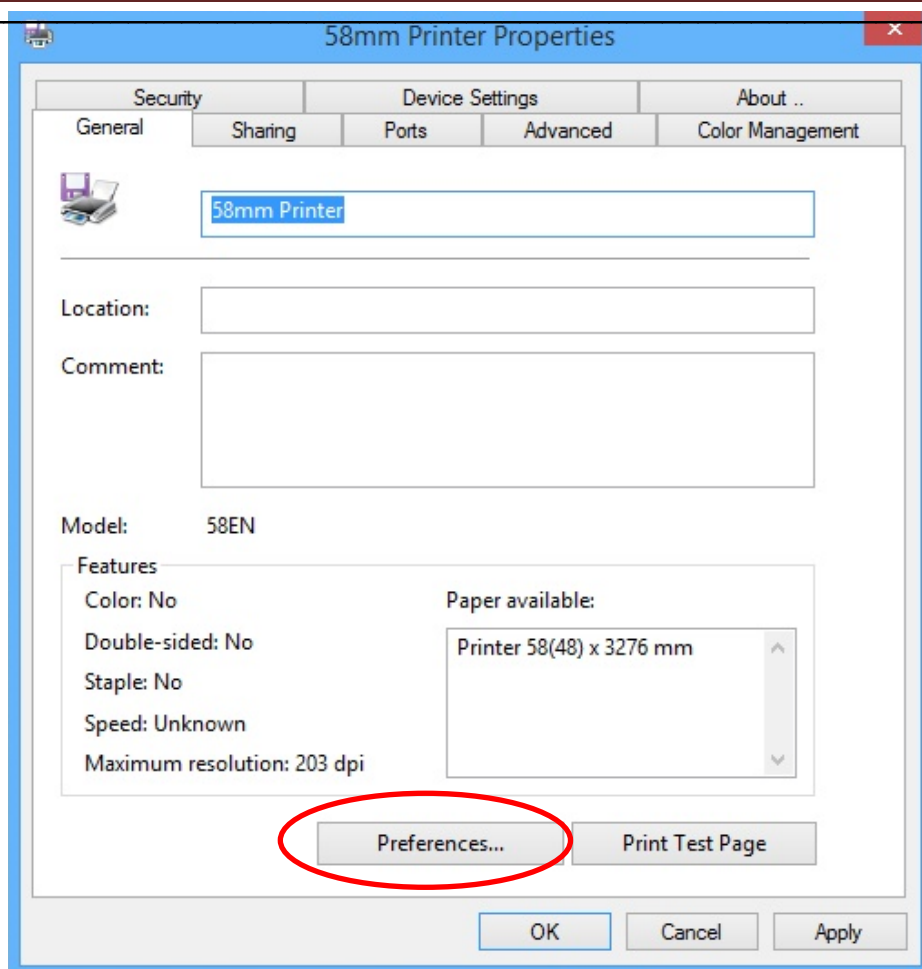
Return to the “General” option in “58mm Printer Prosperities”, such as the following picture:

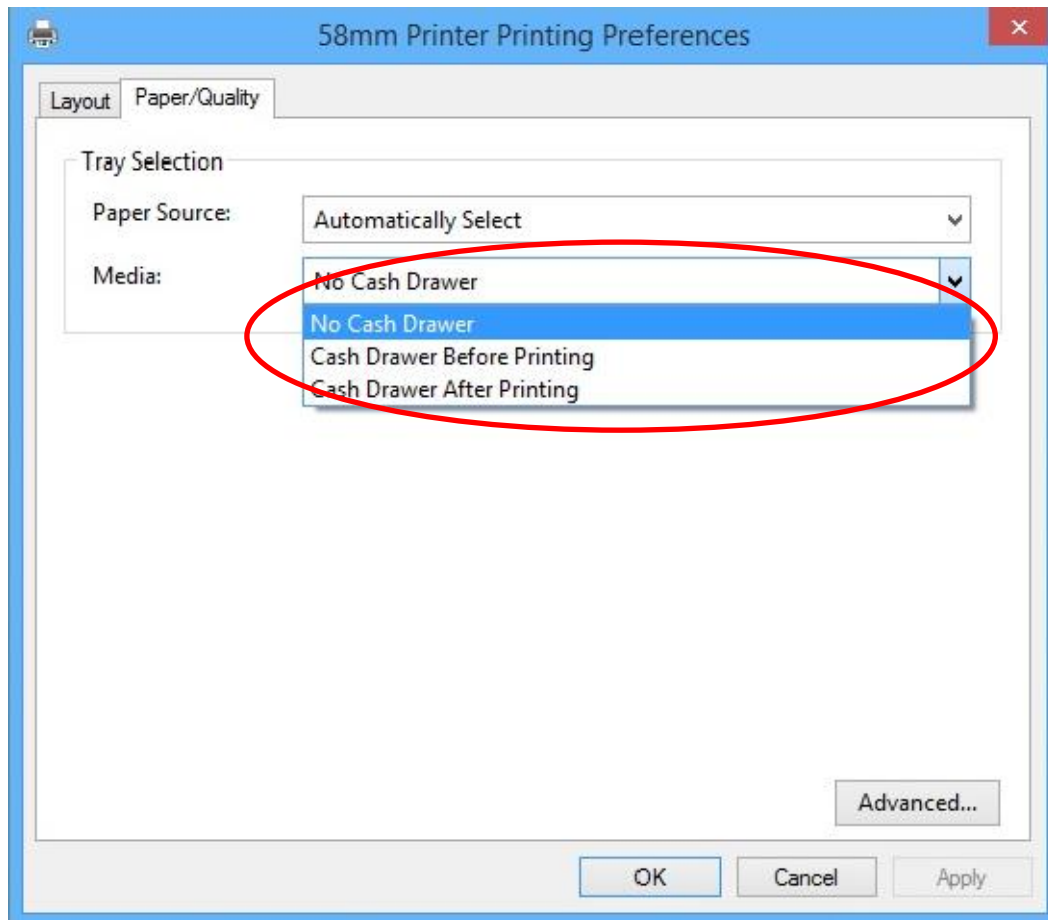


Click “Print Test Page”, if the printer has connected to the computer and the configuration of communication port is correct, the printer would execute the print command, then print the test page.

## 2.4 Other properties and functions setting

The user also could set up the cash drawer operation, please find following instructions:



**Cash Drawer Setting:**

NO Cash Drawer.

Cash Drawer Before Printing.

Cash Drawer After Printing.